

TRAVEL FUELS OUR ECONOMY. WHY TRAVEL IS ESSENTIAL TO

RHODE ISLAND

YEAR	TRAVEL SPENDING	STATE AND LOCAL TAX RECEIPTS	JOB	TRAVEL INDUSTRY EMPLOYMENT RANKING
2019	\$2.5 Billion	\$126 Million	17,300	11
2020	\$1.7 Billion	\$87 Million	12,700	12
2021	\$2.2 Billion	\$97 Million	13,400	12
2022*	\$2.5 Billion			

SOURCE: U.S. Travel Association and Tourism Economics

*Preliminary

Travel plays an essential role in stimulating economic growth, cultivating vibrant communities, creating quality job opportunities and inspiring new businesses, and it is indispensable to our nation's global competitiveness.

Travel is a significant economic driver for **Rhode Island**—and matters to our communities, jobs and public funding.

IN 2022

- Domestic and international travelers spent an estimated **\$2.5 billion while visiting Rhode Island**.
- Travel spending was 1.3% below 2019 levels and 12.2% above 2021.

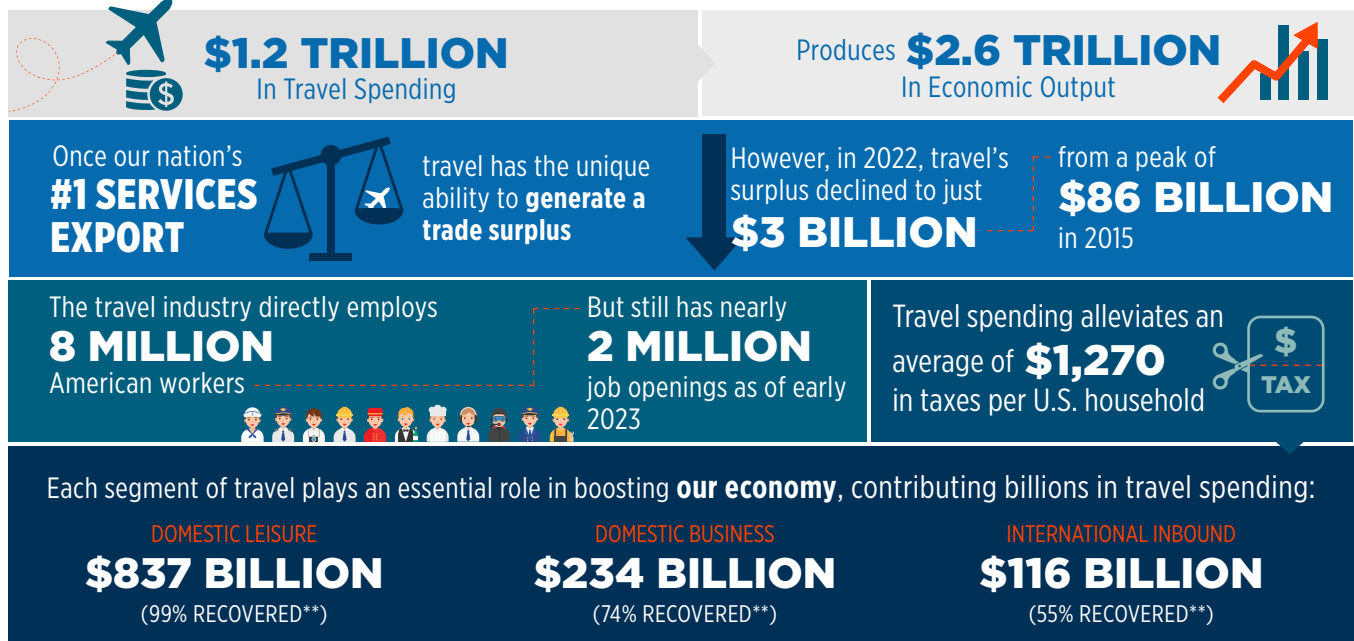
The travel industry **fuels businesses, jobs and investment beyond travel**—creating a ripple effect within our communities, including **Rhode Island**.

IN 2019

- Travel spending directly **supported 17,300 jobs**, and was the **state's 11th largest sector in terms of employment**.
- Travel spending **generated \$126 million in taxes to state and local governments**.
- Rather than taxing constituents, travel brings money into our communities, which helps fund public programs such as police, firefighters, teachers, road improvements and community revitalization projects.

WHEN THE TRAVEL INDUSTRY THRIVES, AMERICA THRIVES.

2022 NATIONAL DATA



**Percent recovered is adjusted for inflation